



Foster Chromatography/FPLC Refrigerators

Foster cabinets, recognised for having excellent temperature stability, are 'recommended' by GE Healthcare Life Sciences for cooling their ÄKTA systems, their use starting in ~1999 by Jencons. Working closely with GE Healthcare Life Sciences, we now offer modification of the extremely energy-efficient Foster cabinets for their ÄKTA systems, particularly the ÄKTA pure protein purification unit. Each unit is fully customised to your exact requirements, e.g., number & position of access ports, electric sockets & scaffold rods - even down to the size of a 2-tier keg rack or placement of shelving, specific to equipment dimensions. We offer delivery & siting by specialist carriers who can remove/refit wheels or tip/tilt/stairwalk to get into laboratories (subject to site survey).

Chromatography Cabinets for ÄKTA Systems: Two sizes – pre-configured plus bespoke accessories/options

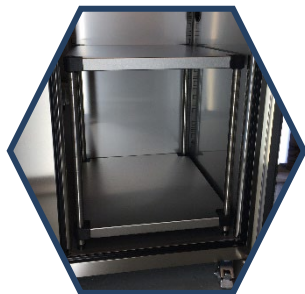
- Using extremely energy-efficient UK-made Foster EcoPro G3 fridges with smartphone-style touch-sensitive controller.
- Two sizes available – 700mm wide single door (600 litres) & 1440mm wide double door (1350 litres).
- Double door unit will take two ÄKTA pure units, each with a fraction collector & sample pump.
- Reconfigured controller parameters specifically for chromatography use.
- Super-smooth easy-clean stainless steel interior & exterior - prevents corrosion inside the cabinets.
- Environmentally friendly R290 refrigerant gas.
- NEW Microprocessor controller with InGaN pure LED easy-view digital display to 0.1°C, with audio-visual alarms.
- User-settable temperature setpoint range: 1°C to 12°C (preset operating range approx. 2°C to 5°C).
- Connectivity-ready through optional gateway.
- NEW Computational Fluid Dynamics (CFD) designed airflow for efficient operation even when shelves are fully loaded.
- NEW high-performance energy-saving 'Aerofoil Tube' + StayClear condenser reduces dust build-up & blockages.
- Supplied on wheels – all braked/lockable.
- Fully insulated, self-closing, lockable safety-glass door(s) with LED lighting.
- Mid-height 65mm access port(s) with modified foam stopper to allow communications cable access.
- Low-level 65mm access port(s) with modified foam stopper for waste line/drain exit.
- IP66 waterproof double internal electric socket(s).
- Overtemperature cut-out thermostat to cut power to ÄKTA(s) if refrigeration stops – prevents expensive columns from being destroyed by overheating.
- Stainless steel two-tier rack for AKTA & fraction collector - (530x610mm).
- Special sliding shelf assembly on retractable runners (max load 100kg).
- Wire shelf conversion platform sheet in stainless steel – for converting the wire shelf to a flat surface.
- Fixed scaffold rod assembly for supporting longer columns.
- Delivered & sited by specialist carriers – can remove/refit wheels or tip/tilt/stairwalk into labs at extra cost.

Model	AMCHR700-1	AMCHR700-2A	AMCHR1400-1	AMCHR1400-2	AMCHR1400-3	AMCHR1400-4	AMCHR1400-5
External Dimensions (h x w x d, mm)	2080x700x855	2080x700x855	2080x1440x855	2080x1440x855	2080x1440x855	2080x1440x855	2080x1440x855
Weight (kg)	140	140	220	220	220	220	220
Wire Shelves (40kg max)	4	4	8	8	8	8	8
Glass Door	1	1	2	2	2	2	2
Access Port	1	2	1	2	2	4	4
Double Electric Socket	1	1	1	2	2	2	2
Overtemperature Cut-out	Option	1	Option	Option	1	1	1
2-Tier Rack (300kg max)	1	-	1	2	Option	-	-
Sliding Shelf (100kg max)	-	1	Option	-	1	2	2
Stainless Platform Sheet	Option	1	Option	-	1	2	2
Scaffold Rod Support	-	-	Option	Option	Option	Option	1

NB: All Chromatography Cabinets are modified to order and can be configured to exact requirements utilising all options offered – the models above are the most common configurations ordered

Foster Chromatography Refrigerators

Foster Cabinet showing modification options:



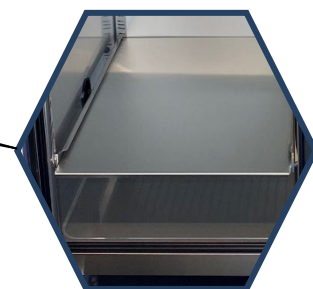
2 Tier Keg Rack



Sliding Shelf on
retractable runners



Central Scaffold Rod Column Support



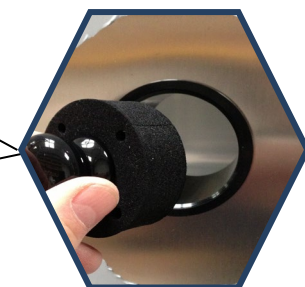
Platform Sheet Shelf



Double Electric Sockets
(Positioned centrally on rear wall)



Access Port for Communications Cable
with foam stopper



Access Port for Drainage/Waste
with foam stopper