



INCUBATORS

Efficient use of
valuable space

Distributed by
GPE Scientific

THE NEW HETTCUBE GENERATION

- Now with touchscreen and more options

HettCube
200 | 200 R



HettCube
400 | 400 R



HettCube
600 | 600 R



Watch our animation video
of the HettCube on YouTube.

EVERYTHING UNDER CONTROL



- Intuitive operation with the new touchscreen

Get clear and concise information on your incubation process – at a glance! With the new 4.3 inch touchscreen and intuitive menu dashboard, you can easily view the status of the device, as well as any alarms and events in the past 4 weeks. Any event or irregularity (such as door openings, tolerance band violations or power failures) are electronically documented in the logbook.



- Easy weekly programming

The user-friendly touchscreen allows for uncomplicated adjustment of weekly programming without additional software – directly on the device. The holiday function allows you to define additional temperature drops for your days off already months in advance. Easily determine the start time or the time period as well as the frequency of your Temperature reduction in a real-time calendar.



SAFETY FOR YOUR SAMPLES



— Flexible settings

Various events and alarm functions are individually adjustable. For example: Deviations from the interior temperature can be limited individually over tolerance range limits or fixed via independent temperature guard of Classes 3.1 and 3.2. Class 3.2 is already included in the standard version of all refrigerated HettCubes.



— Process reliability even in the event of a power failure

With the new HettCube generation, you can keep control over your samples even in the event of a power failure. Define by yourself two different settings options how your HettCube's should behave in the event of a power failure.

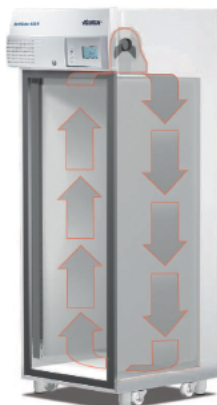
Setting the period

By default, the device automatically restarts at the point where the power failed.

But Users can also define the acceptable length of time in the event of a power failure. Once power is restored, the HettCube will verify whether this pre-set period has been exceeded. Should this be the case, the settings will be paused and the incubator will automatically move to a Standstill (Safe) Mode. Otherwise, the unit will continue with normal operation and user settings.

Setting the tolerance band

Tolerance band limits and holding temperature are individually configurable. After a power failure, the HettCube checks whether there is a tolerance band violation. The HettCube then automatically adjusts to the previous configured holding temperature. If there is no violation of the tolerance band the HettCube resumes its work.



— Perfect conditions

HettCube incubators combine the advantages of natural and forced convection to provide a stable and uniform environment for cultures. The fan is housed outside of usable space, providing higher throughputs and limiting airflow inside the incubator. Temperature is primarily maintained by radiated heat to ensure even temperature distribution and to prevent hotspots. This yields optimum growth conditions and considerably reduces the potential of samples drying out.

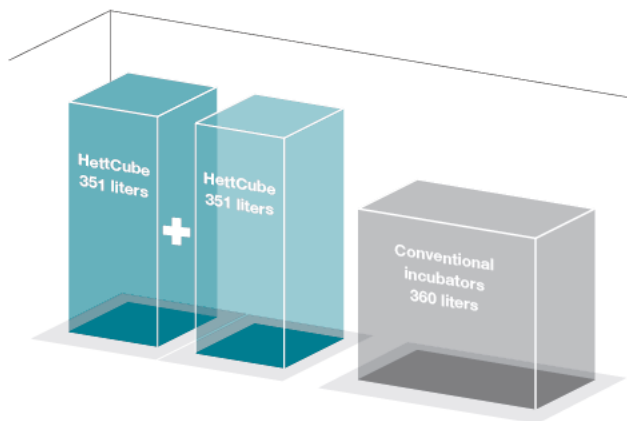
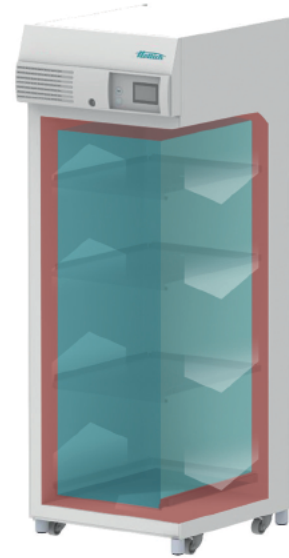
MAXIMUM USABLE SPACE – SMALLEST FOOTPRINT

- 30 % more validated usable space

Due to their gentle air flow and edge-to-edge temperature uniformity, HettCube incubators provide up to 30 % more validated usable space* than a traditional incubator with the same internal volume.

*in accordance with DIN 12880:2007-05

- 520 liters of interior space
- 351 liters of validated usable space*



- 50 % smaller footprint

The HettCube's upright design requires up to 50 % less floor space than a traditional incubator with similar capacity. The spacesaving footprint allows you to nearly double your capacity by accommodating two HettCube incubators within the same footprint as one conventional incubator.

HettCube

702 litres of validated usable space with the same footprint

Conventional incubators

360 litres of validated usable space

HettCube	Conventional incubators
Gentle air flow + High-performance insulation + Small footprint =	Strong air flow + Bulky insulation + Large footprint =
Maximum loading capacity + cost savings per m ² laboratory space	Low loading capacity + higher costs per m ² laboratory space

HIGH USER COMFORT

— Easy cleaning

The internal lining, drawers and shelves are made of stainless steel and can be readily removed for thorough cleaning and autoclaving.

— Maximum use of space

Get higher loading capacities in less space by using the special inserts.

Our rack for Petri dishes and the Loewenstein shelf, allows large numbers of cultures to be processed quickly and economically. They provide more space, clear order and a comfortable handling.

— Unimpeded access

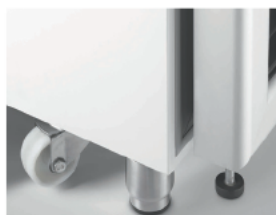


1 HTS shelf with telescopic rails included!

The stable telescopic rails of the Hettich Telescope System (HTS) can be extended up to 70% horizontally. This allows you to reach easily the samples in every corner.

— Stay mobile

The HettCube 400 and 600 models have castors for moving them to the desired position. Once in position they can be fixed with adjustable feet.



— Quiet operation

Our incubators are quieter than normal conversation when running, and will not increase the noise levels within your lab. A HettCube incubator has a remarkably low noise output of ≤ 44 dB(A).

— Optimum safety

The practical door-locking mechanism locks both the door and the control panel at the same time. This prevents inadvertent changes to parameters and harmful effects on samples.

— External connection

One bushing on the rear panel (42 mm opening) for external measuring devices (sensors) or power cables for indoor devices.



— Fast and easy access

HettCubes need only one door and do not require an inner door. This allows a true one-hand operation. A HettCube incubator will close automatically at an opening angle below 90° . A magnetic mechanism assists this automatic closing.



— Save space

The door does not require space at the side to open. This means that the incubator can be positioned in a corner or close to other lab equipment. The door hinges can easily be moved from one side of the incubator to the other.



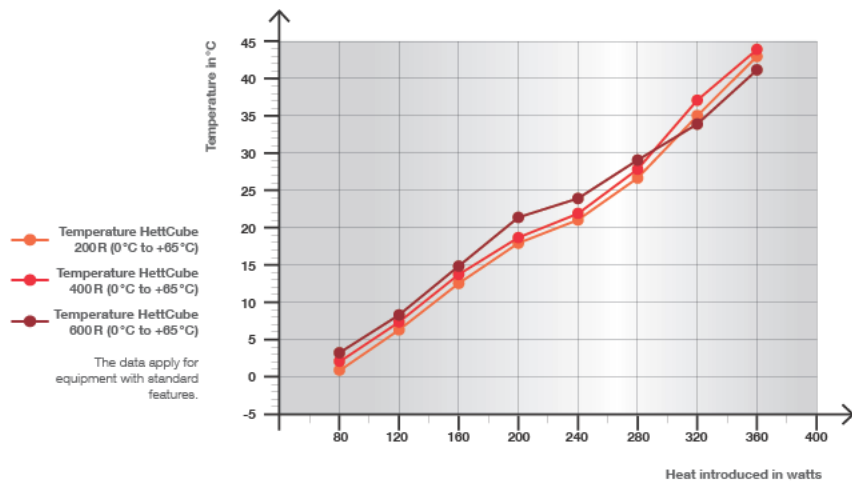
HEAT COMPENSATION

Reliable compensation of temperature differences

Introduced energy into the usable space by external equipment are immediately and actively compensated with our refrigerated units.

Heat compensation of the HettCube 200 R / 400 R / 600 R

Lowest attainable temperature values upon introduction of equipment with different heat outputs.

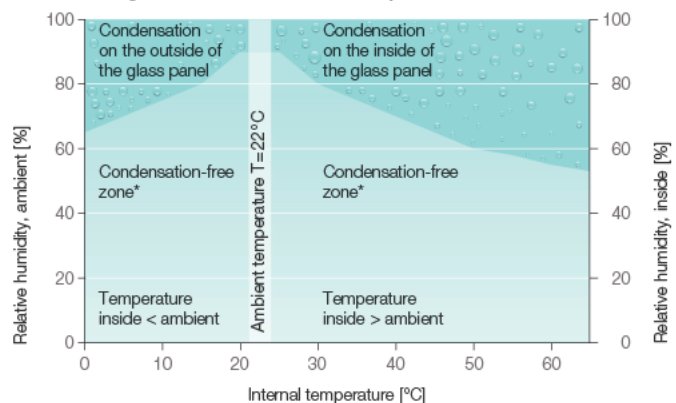


HettCubes with glass door

The optional glass door enables users to check on their cultures without opening the door.



Condensation diagram for the HettCube 600 with glass door at an ambient temperature of +22 °C



*Condensation possible in the boundary areas

LOW ENVIRONMENTAL IMPACT



— Minimal operating costs

Our HettCubes heat or cool only when needed. At an operating temperature of 37 °C a HettCube incubator consumes less than 0.05 kWh. This brings average savings of up to 450 Euros annually*. Therefore, investment costs are recouped within shorter time. The use of a HettCube incubator saves on average up to 940 kg of CO₂ emissions annually*.

Additionally: The insulation of the HettCubes consists of water-driven foam, which contains no fluorinated hydrocarbons. Their GWP value (Global Warming Potential) is a thousand times lower than that of conventional insulating foams.

*Assuming 24h operation 365 days a year. The basis for calculation is € 0.29 per kWh – the average price of electricity in Germany in 2018 and 0.6 kg CO₂ per kWh.

— First-class isolation

The advanced control system and insulation mean that the incubator will maintain a set temperature even if there is only a difference of 1 K (°C) from the ambient temperature. This allows an uncooled HettCube incubator to be used in situations in which a comparable incubator would require cooling.

PROVEN QUALITY



— Certifications

Hettich products comply with all applicable safety regulations, carry the TÜV seal and are available as IVDR variants. Hettich manufactures according to the applicable quality and environmental management systems, including ISO 9001, ISO 13485 and ISO 14001.

Each HettCube is temperature validated before delivery by means of the 9 point measurement and receives a HettCert factory certificate, included free of charge. All temperature data are determined according to DIN 12880: 2007-5.

TECHNICAL DATA

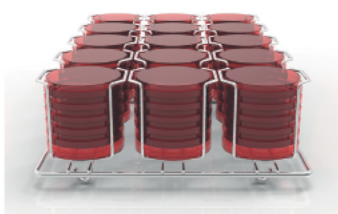


	HettCube 200 200 R	HettCube 400 400 R	HettCube 600 600 R
Temperature range for incubators cooled incubators	1 K above ambient temperature up to +65 °C 0 °C up to +65 °C	1 K above ambient temperature up to +65 °C 0 °C up to +65 °C	1 K above ambient temperature up to +65 °C 0 °C up to +65 °C
Exterior dimensions (without access port and door handle) W x D x H in mm	710 x 825 x 970	710 x 825 x 1425	710 x 825 x 1,990
Interior dimensions W x D x H in mm	535 x 690 x 420	535 x 690 x 850	535 x 690 x 1,415
Internal volume in liters	150	310	520
Validated usable volume in liters	82	199	351
Percentage validated usable volume / internal volume	54 %	64 %	67 %
Footprint in m ²	0.6	0.6	0.6
Weight in kg	92 103	117 128	164 175
Number of shelves provided as standard	2 (1 standard + 1 HTS)	3 (2 standard + 1 HTS)	4 (3 standard + 1 HTS)
Temperature fluctuation at +37 °C	± 0.1 K	± 0.1 K	± 0.1 K
Temperature uniformity at +37 °C	± 0.2 K	± 0.2 K	± 0.2 K
Temperature uniformity at +25 °C	± 0.1 K	± 0.1 K	± 0.1 K
Recovery time after door has been opened for 30 s at +37 °C	≤ 3 min	≤ 4.5 min	≤ 5.5 min
Energy consumption at +37 °C	0.038 kWh/h	0.046 kWh/h	0.056 kWh/h
Noise level	≤ 41 dB (A) ≤ 44 dB (A)	≤ 41 dB (A) ≤ 44 dB (A)	≤ 41 dB (A) ≤ 44 dB (A)
Power supply	220 – 240 V 1 ~ / 50 – 60 Hz	220 – 240 V 1 ~ / 50 – 60 Hz	220 – 240 V 1 ~ / 50 – 60 Hz
Cat. No.	62000 62005	64000 64005	66000 66005
General Purpose Version	62001 62006	64001 64006	66001 66006
Other voltages			
100-120 V 1 ~ / 50 – 60 Hz	62000-01 62005-01	64000-01 64005-01	66000-01 66005-01

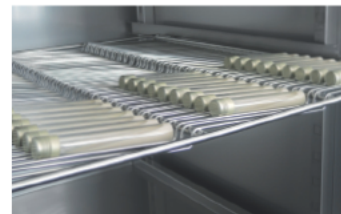
MORE OPTIONS AND ACCESSORIES



Stacking kit



Rack for petri dishes



Rack for Loewenstein application

	Cat. No.
Shelf (Set) Made of stainless steel, with standard rails, max. load (kg): 50	60001
Shelf (HTS-Set) Made of stainless steel, with telescopic rails, extendable up to 70 %, max. load (kg): 40	60031
Drawer (HTS-Set), High 30 mm Made of stainless steel, with telescopic rails, extendable up to 70 %, tightly welded, max. load (kg): 40	60024
Drawer (HTS-Set), High 65 mm Made of stainless steel, with telescopic rails, extendable up to 70 %, tightly welded, max. load (kg): 40	60025
Drawer (HTS-Set), High 105 mm Made of stainless steel, with telescopic rails, extendable up to 70 %, tightly welded, max. load (kg): 40	60026
Rack (HTS-Set) For Petri dishes, stainless steel, with telescopic rails, extendable up to 70 %, Petri dishes Ø (mm): 90, max. load (pcs): 90	60038
Rack (Set) For Petri dishes, stainless steel, with standard rails, Petri dishes Ø (mm): 90, max. load (pcs): 90	60039
Rack For Petri dishes, stainless steel, Petri dishes Ø (mm): 90, max. load (pcs): 90	60040
Rack (HTS-Set) For inclined storage of cultures (Loewenstein), stainless steel, with telescopic rails, extendable up to 70 %, inclination angle: 5°, tube Ø (mm): 15-20, max. load (pcs): 81 tube	60036
Rack (Set) For inclined storage of cultures (Loewenstein), stainless steel, with standard rails, inclination angle: 5°, tube Ø (mm): 15-20, max. load (pcs): 81 tubes	60037
Rack For inclined storage of cultures (Loewenstein), stainless steel, inclination angle: 5°, tube Ø (mm): 15-20, max. load (pcs): 81 tubes	60041
Frame L, 16-place Made of stainless steel, for inclined storage of cultures, tube Ø (mm): 15-20, Tube length (mm): 100-125, inclination angle 5° or 20 °	60027
Frame XL, 16-place Made of stainless steel, for inclined storage of cultures, tube Ø (mm): 15-20, Tube length (mm): 126-170, inclination angle 5° or 20 °	60028
Switchboard 4-fold socket strip, as a unit controllable via display, on the back of the device	60521
Independent PT 100 sensor For independent temperature measurement, four-wire system, temperature values output with analogue output 4-20 mA on the back of the device	60503
Passive dehumidification For individual or timed opening of a dehumidification module via the touchscreen	60042
Service: Assembly of the Stacking kit for the HettCube 200 200 R	60043
Service: Changing the door hinge	60044
Glass door All-glass outer door, for HettCube 200 200 R	60030
Glass door All-glass outer door, for HettCube 400 400 R	60029
Glass door All-glass outer door, for HettCube 600 600 R	60013
Access port Ø (mm): 22, Foam stoppers	60006
Access port Ø (mm): 42, Foam stoppers	60007
Access port Ø (mm): 67, Foam stoppers	60008
Stacking kit For safe stacking of two HettCubes 200 200 R	60009
Rolling cabinet Lockable, with one drawer, incl. lockable castors, WxDxH (mm): 770x800x550, for HettCube 200 200 R	60010
USB Port Lock (Set) For securing the USB-A interface. Set consisting of 10 securing clips and 1 USB key tool.	60525
Parameter for continuous cooling operation For storing samples below 15 °C for more than 2 weeks	60526

EXTENSIVE STANDARD EQUIPMENT

4.3 inch touchscreen:

- Target / actual display
- Real-time calendar
- Timer
- 12/24 hour clock?
- Language options (English, German, French and Spanish)
- Week programming with holiday function
- Log (door openings, alarms and operating hours)
- Temperature diagram in 3 zoom levels (up to 4 weeks)
- Setting accuracy 0.1 ° C
- PIN lock
- Door alarm individually adjustable
- Temperature selection monitor class 3.1 for all models
- Temperature selection monitor class 3.2 for all refrigerated models
- Three power failure scenarios
- Programming external devices via switchboard (option)
- Extensive program functions (Start/Stop, Time period, Time at start, Time at temperature, up to 99 segments per program,...)

Control panel and door lockable simultaneously

USB service interface

Bushing on rear panel Ø 42 mm

Potential-free alarm output

Interior of high-quality stainless steel (W-St 1.4301 (ASTM 304))

In addition you get for free...

Up to 3 Shelf standard shelves of stainless steel (depending on model size)

HTS shelf of stainless steel with telescopic rails

Factory certificate (HettCert) - 9 points measurement analog to DIN 12880: 2007-05

Compensation for unneeded standard shelves*

* Choose other shelves / drawers as standard, we credit you the price of unused standard inserts.

