

# The MERKUR® Series



Truck  
transport  
of  
refrigerated  
liquefied  
gases

Type-approved in accordance with the Directive on Transportable Pressure Equipment (TPED) and the European Agreement concerning the International Carriage of Dangerous Goods by Road and Rail (ADR/RID), with test certificate of the German Inspectors (TÜV).

Super-insulated cryogenic storage tank for the transport of

- liquid nitrogen
- liquid oxygen
- liquid argon

# The MERKUR® Series

The tanks of the MERKUR® Series are ideally suitable for a wide variety of applications in research, medicine and industry: fully equipped and ready for immediate use.

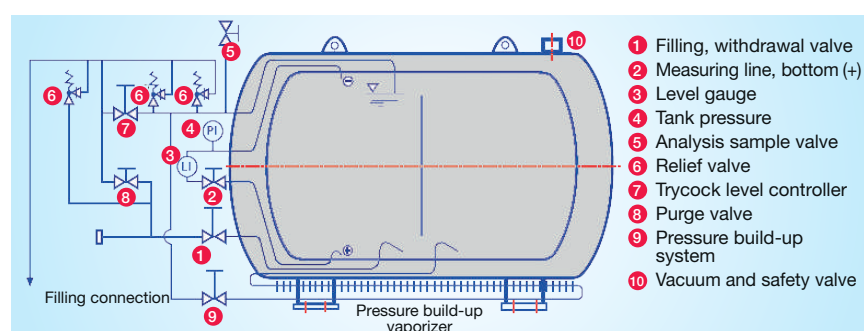
- Cryogenic gas supply up to 3,000 litres
- For applications within a limited period of time, such as test series, temporary production increases, special tasks, production bridging or permanently changing places of application
- Easily and safely mountable on transport vehicles – optionally available mounting carriage and condensate trough
- Suited for short- and long-term supply
- Welded stainless steel construction
- Rugged design: manufacture and material selection ensure a long service life
- Long-term stability of insulation vacuum thanks to the use of special adsorption and getter materials
- Quality control in each production phase, e. g. x-ray and helium leak tests
- Swagelok analysis coupling

		Technical Data					
		MERKUR®500	MERKUR®600	MERKUR®850	MERKUR®1000	MERKUR®2000	MERKUR®3000
Geometric volume	l	512	632	851	995	2,100	2,938
Working pressure, max.	bar	6	6	6	6	6	6
Weight empty	kg	340	401	610	570	1,200	1,520
Weight filled (with liquid nitrogen)	kg	730	886	1,374	1,300	2,810	3,770
Total height	mm	1,075	1,075	1,175	1,175	1,450	1,660
Total length	mm	1,640	1,865	1,950	2,165	2,900	3,080
Diameter	mm	950	950	1,050	1,050	1,300	1,500
Evaporation rate, static	%/24 hrs	1.5	1.4	1.3	1.2	1.0	0.9
Liquid nitrogen, liquid argon	article no.	78200206	78204064	-	78200208	78202119	78200210
Liquid oxygen	article no.	78200207	78204094	78206640	78200209	78202118	78200211

Other tank sizes upon request

## Accessories:

- Pressure build-up controller 1-6 bar
- Maximum pressure controller 1-6 bar
- Mounting carriage
- Trough for condensate



## Contact

GPE Scientific Limited  
Greaves Way Ind. Estate  
Leighton Buzzard  
LU7 4UB

Tel: +44(0)1525 382277  
Email: [sales@gpescientific.co.uk](mailto:sales@gpescientific.co.uk)  
Web: [www.gpescientific.co.uk](http://www.gpescientific.co.uk)